



V F F S



NICHROME

Filpack CMD ALPHA

**Advanced Packaging
Solutions for Liquids**

➤ Accurate

➤ Versatile

➤ Heavy Duty



NICHROME
Packaging Solutions

An ISO 9001:2015 and ISO 22000:2005 Certified Company

www.nichrome.com

Salient Features

- Twin head construction with independent head operation
- Flexibility to pack different or identical free flow liquid products simultaneously
- Flexibility to use two different dedicated pack width options to accommodate two quantity ranges of liquids
- Machine structure in stainless steel with enclosed SS cabinet
- Precise mechanical filling system with quick volume changeover through set recipes on HMI
- Bag length control through PLC offering increased operator friendliness
- Specially designed film roll unwinding mechanism for smooth bag pulling operation
- Sealing jaw operation through LINK mechanism directly coupled to horizontal & vertical seal assemblies
- Solid state control technology for Impulse sealing system
- Product contact parts from Stainless Steel Grade AISI-304
- Advantageous chain-less & lubrication-free machine design
- Operator-friendly centrally located/housed electrical and electronic system of both heads of machine
- Facility for maintaining either track of machine keeping second track in operation
- Smaller footprint
- Substantially reduced height of the machine compared to conventional machines
- UV sterilization of film
- Visual alarm through HMI with interlock for machine to parking mode in the event of end of film roll
- Tool-less quick changeover of filling nozzle & CIP adaptor during production to CIP and vice versa
- Servo voltage stabilizer for machine

Special Notes

- High-speed Filpack Servo 6K & 12K models available for mega capacity dairy plants
- Single head Filpack CMS Alpha available for dairy farms & mini dairy plants

Technical Specifications

- Bagger Speed (max. up to): 6000 bags/hr

Pack Size Options

Quantity range	10ml-100 ml	20ml-200 ml	50ml-500 ml	100ml-1000 ml
Pouch width	75 mm	100 mm	125 mm	150 mm
Lay flat film reel width	175 mm	225 mm	275 mm	325 mm
Min. pouch length	100 mm	100 mm	100 mm	100 mm
Max. pouch length	250 mm	250 mm	250 mm	250 mm

(Dedicated fixed size for each head to be selected from above options)

Packaging Material

Co-extruded virgin LDPE film or heat sealable specific laminates like BONPOLY for Liquids

Electrical supply	Stabilized 415 V AC, 50 Hz, 3 phase 4 wire
Connected load	4.5 KVA
Peak powder rating	8.0 kW
Cooling water	200 liters/hour at 1 bar pressure & at ambient temperature
Machine dimensions	1814 mm (W) x 1011 mm (D) x 2750 mm (H) approx.

Pouch Format



CSPP

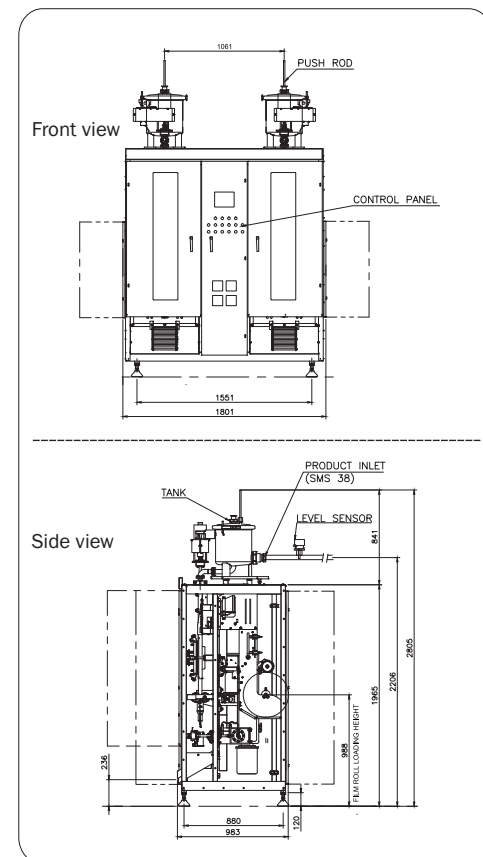


Applications

Plain Milk, Flavored Milk, Lassi, Curd, Juice Drinks, Water, Edible Oil, Vanaspati, Ghee

Optional Accessories

- Photo Mark Registration unit for using panel printed films
- Date Batch Ink Coder/Embossing in vertical seal/ Thermal Transfer Over (TTO) printer
- Broad seal pouch with tamper evident feature
- Options of different dedicated pouch widths
- Innovative off-center seal pack
- Kite shaped angular pouch format for beverage application
- Perforated chains for <200 ml packs using specialty films
- Flap attachment as carry handle facility
- Pneumatic filling system for viscous products
- Pouch collecting tray and stand
- Automatic pouch counting and crating system
- Post packaging system for pouches in bulk plastic bags
- Automatic CIP system
- Cleaning friendly extended S.S. legs for hygienic floor area below the machine
- Puff insulated product tanks for
- Level sensor interlock for milk level in the machine tank



Terms & Conditions
 1. Speeds and accuracies mentioned are at ideal conditions and may vary depending upon product being packed and packaging material used.
 2. We reserve the right to incorporate changes, modify and upgrade as found appropriate for specific application of packaging so as to fine tune the product with machine.
 3. Specifications are subject to change without notice.
 4. Photographs are for reference only and actual models may vary.

May 2018 www.intercsdesigns.com



NICHROME INDIA LTD. Safire Park Galleria, 4, Pune-Mumbai Road, Shivajinagar, Pune – 411 005, India
 Tel.: +91 - 20 - 6601 1001 Fax: +91 - 20 - 6601 1010 E-mail: marketing@nichrome.com www.nichrome.com

Service Centres & Offices at: Delhi | Kolkata | Mumbai | Bangalore | Hyderabad | Chennai | Ahmedabad | Chandigarh | Kanpur
 ASEAN | MIDDLE EAST | SAARC | RUSSIAN FEDERATION & CIS | AFRICA | USA

Packaging Solutions For • Liquids • Grains • Powders • Seeds • Snacks • Pharma • Personal Care